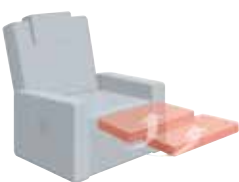


Optionally with:



Normal leg rest

or



Extended leg rest

supplementary equipment options:



Lumbar support



Seat / backrest heating

for all recliners:

- Recliner with castors (against a surcharge with parquet castors)
- Not suitable for striped and checkered fabrics
- All variants with side element pocket
- All variants with patented illuminated manual switch
- Seat optionally in:

superlastic
soft

superlastic
med

superlastic
plus



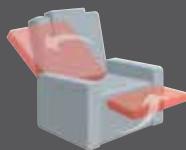
Bezug:
33 Longlife Soft zink

B/T/H:
84/97/107

Cumulus Vario 10

7706

L



- adjustment by weight shifting
- manual leg rest adjustment
- manual backrest adjustment

Z



- 2-motors (separate adjustment)
- electrical leg rest adjustment
- electrical backrest adjustment

G



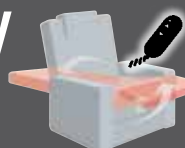
- 1-motor (simultaneous adjustment)
- electrical leg rest adjustment
- electrical backrest adjustment
- lift-and-rise function after closing the leg rest (max. 130 kg)

T



- 3-motors (separate adjustment)
- electrical leg rest adjustment
- electrical backrest adjustment
- lift-and-rise function after closing the leg rest (max. 130 kg)

W



- 2-motors (separate adjustment)
- electrical leg rest adjustment
- electrical backrest adjustment
- heart balance position

N



- 3-motors (separate adjustment)
- electrical leg rest adjustment
- electrical backrest adjustment
- heart balance position
- lift-and-rise function after closing the leg rest (max. 130 kg)

Normal

...up to 130 kg

W/D/H: 84/97/107
seat width: 47 cm



available in the 10 different versions of the Cumulus Vario 10 system

XL

...up to 160 kg

W/D/H: 93/97/112
seat width: 54 cm



available with separately adjustable leg rest and backrest and lift and rise function by 3 motors – version T

XXL

...up to 200 kg

W/D/H: 101/101/112
seat width 62 cm



available with separately adjustable leg rest and backrest and lift and rise function by 3 motors – version T

Cumulus Vario 10

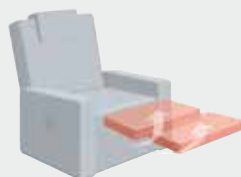
7706

all regular recliners are optionally available with:



Normal leg rest

or



Extended leg rest

valid for all recliners:

- Recliner with castors (against a surcharge with parquet castors)
- With adjustable headrest
- Not suitable for striped and checkered fabrics
- All variants with side element pocket
- All variants with patented illuminated manual switch
- Seat optionally in:

superlastic soft **superlastic** med **superlastic** plus



all “XL” and “XXL” recliners offer:

- separately adjustable leg rest, backrest and lift and rise by 3 motors
- extra large seat
- lift and rise function up to 160 or 200 kg
- optionally extended leg rest
- seat optionally in 3 seating comfort levels

additionally available for the recliner „XL“:

- the recliner „XL“ is also available with 2 motors, without lift + rise function